

**KARP ASSOCIATES, INC.**  
260 Spagnoli Road Melville, NY 11747  
(631) 768-8300 - Phone  
(631) 768-8350 - Fax

DATE

### SPECIFICATIONS

#### GENERAL SCOPE:

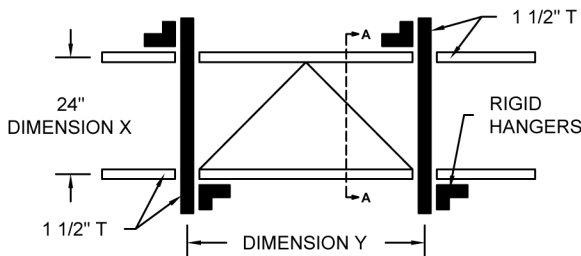
Access doors shall be Karp Type KSTE/CAD as manufactured by Karp Associates, Inc., Melville, N.Y. Sizes shall be as indicated on the drawings.

#### CONSTRUCTION:

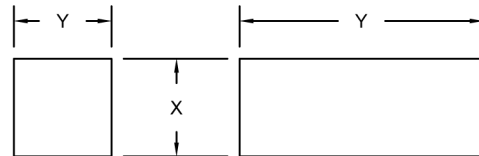
1. Frame shall be 20 gage hot dipped galvanized steel.
2. Door shall be 20 gage electro-galvanized steel with 7/32" flange.
3. Escutcheon caps shall be plastic molded with hinged flaps.
4. Locks shall be budget locks operated with square shanked key.

#### STANDARD SIZES (Special Sizes On Request)

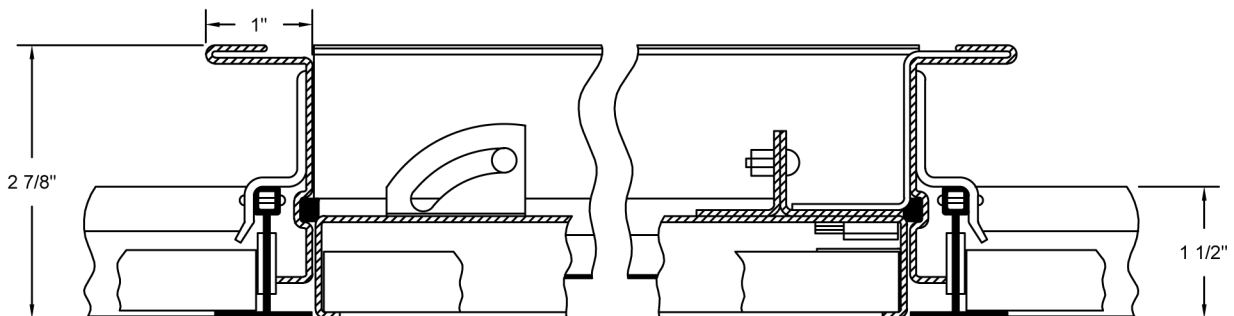
DOOR SIZE (IN.) X Y	SHIP WT. (LBS.)
24 x 24	19.0
24 x 48	35.0



PANEL SUPPORT ILLUSTRATION



OPENING SYSTEMS



SECTION A-A  
SCALE 1:2

### PROJECT DATA

Project Name:

Architect:

Contractor:

Agent/Customer Name:

Tagging Instructions:

Special Instructions:

To be purchased from Industrial Hardware & Specialties, Inc.  
[www.industrialhardware.com](http://www.industrialhardware.com)

T:973-684-4010 Fax:973-684-3095



### PROJECT SCHEDULE

Qty.	H	W	No. of Latches	Finish	Remarks

