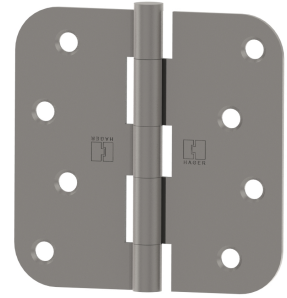


RC1842

Five Knuckle
Plain Bearing Hinge

Application:

- Reversible
- Removable pin
- Round corners (5/8" radius)



PRODUCT SPECIFICATIONS

MATERIAL:

- Steel with steel pin

FINISHES:

- USP, 1D, 2D, US3, 3LB, US4, ABA/US5, US10A, US10R, US15 (3.5 x 3.5 only), AN/US15A, US26, US26D

PACKAGING:

- Boxed one pair (2 each) with screws.

NOTES:

- Hager residential hinges are provided without lubrication. We recommend lubricating the hinges after installation.
- All residential hinges conform to the "Light Weight" requirements of ANSI A156.1.

PRODUCT SIZE OPTIONS

| HINGE SIZE (INCHES) | HINGE SIZE (MM) | HOLE COUNT | GAUGE OF METAL | PIN DIAMETER | SCREW SIZE (WOOD) |
|---------------------|-----------------|------------|----------------|--------------|-------------------|
| 3 1/2 x 3 1/2 | 89 x 89 | 6 | .085 | .234 | 3/4 x 9 FH |
| 4 x 4 | 102 x 102 | 8 | .085 | .234 | 3/4 x 9 FH |