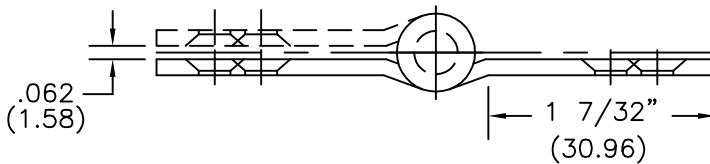
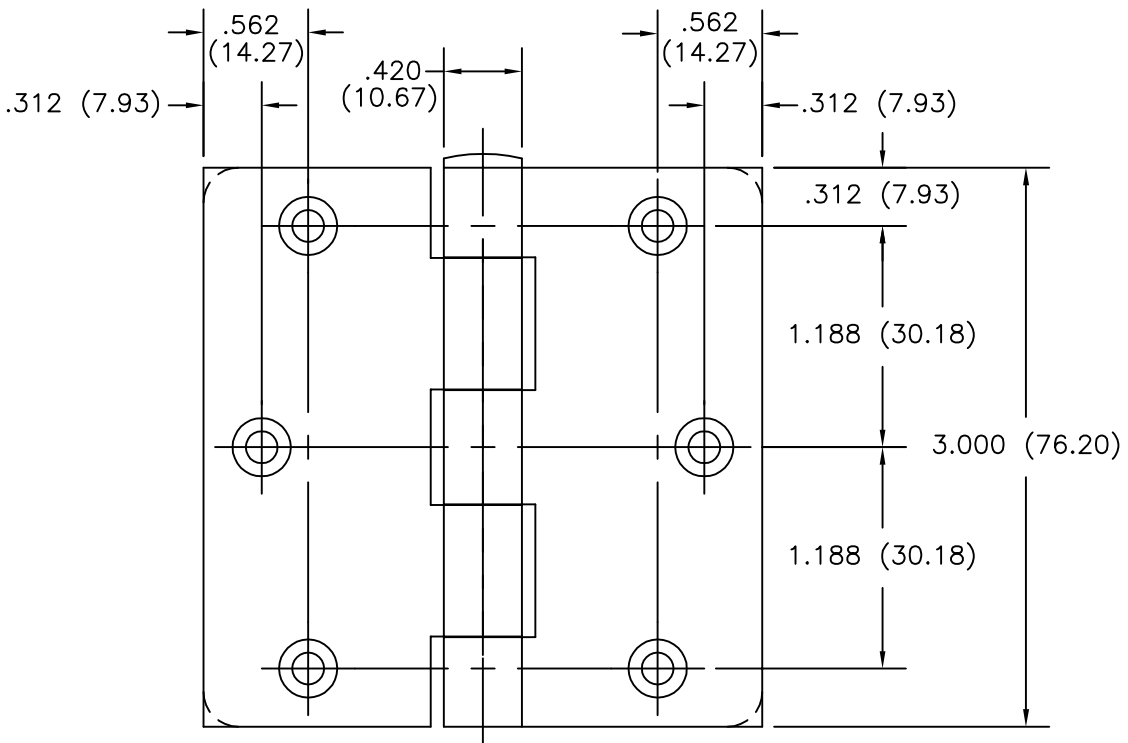


FULL MORTISE
RESIDENTIAL HINGE

SIZE: 3 x 3
(76.20 x 76.20)

Template No. T397

Rev. 2A 10-28-02 RAM



-DO NOT SCALE-

CATALOG NUMBER	TYPICAL CORNER RADII	METAL GAUGE
STEEL HINGES		
1741	SQUARE	.085 (2.16)
RC1741	1/4 (6.35)	.085 (2.16)

PIN DIAMETER .234 (5.9)
COUNTERSUNK FOR #9 SCREWS

ALL NON-BRACKETED DIMENSIONS ARE IN INCHES,
ALL BRACKETED DIMENSIONS ARE IN MILLIMETERS.

Hager testing conforms to ANSI-A156.1.



HAGER RESERVES THE RIGHT TO MAKE
DESIGN CHANGES WITHOUT NOTICE. CALL
HAGER ENGINEERING AT 1-800-325-9995
FOR LATEST REVISION DATE OF TEMPLATE.

HAGER COMPANIES
139 VICTOR STREET
P.O. BOX 12300
ST. LOUIS, MISSOURI 63157-0300

Template No. T397