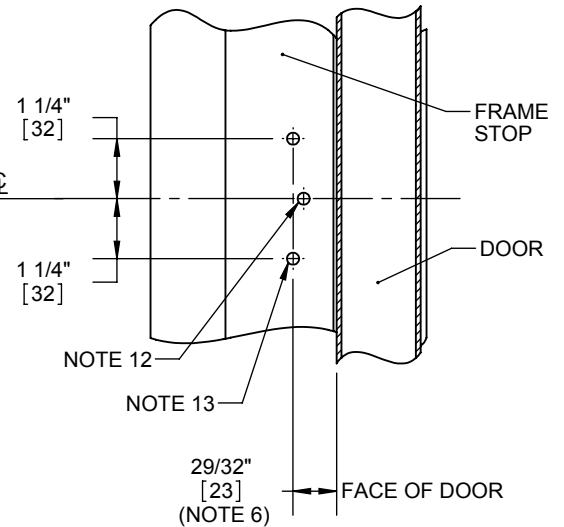
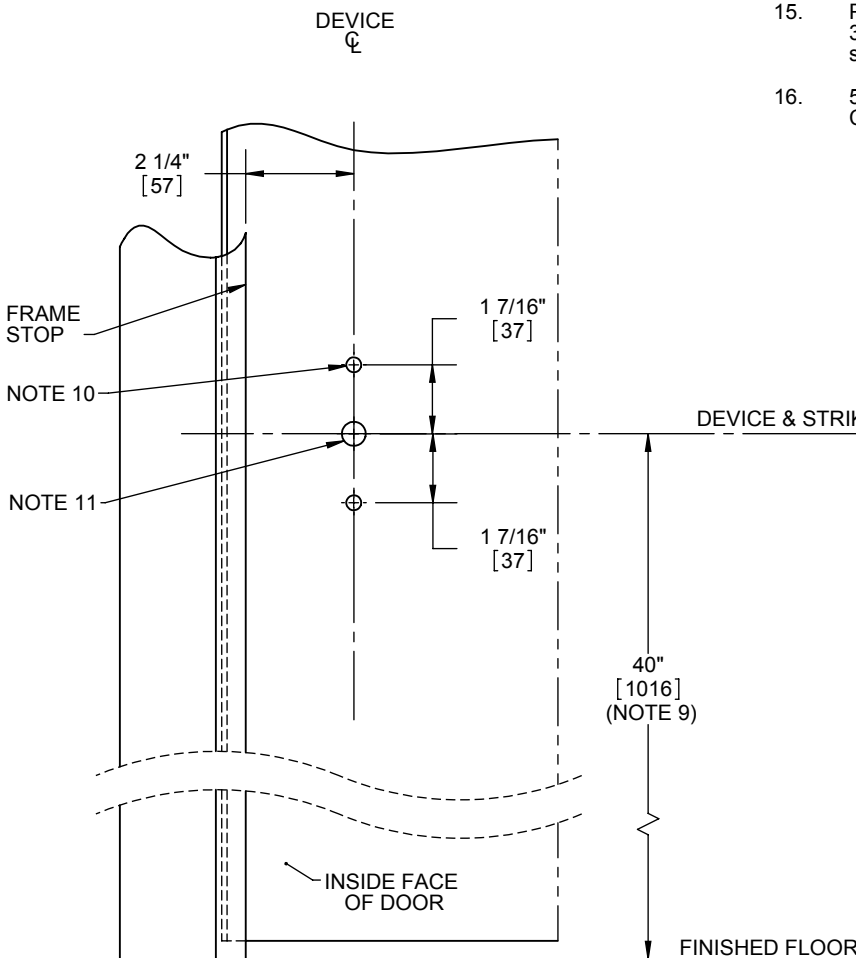
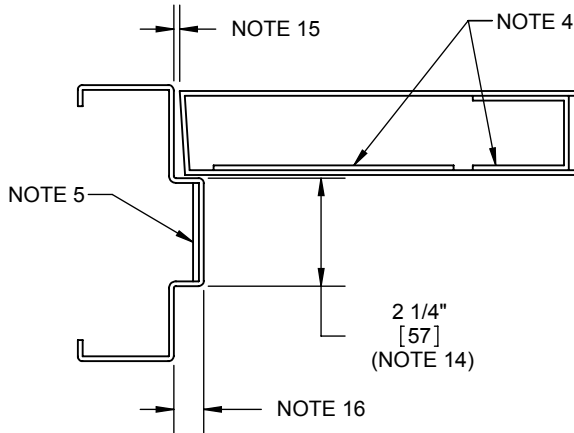


4700 RIM DEVICE DOOR PREP TEMPLATE APPLICATION FOR METAL AND WOOD DOORS (FOR PANIC AND FIRE RATED DEVICES)

NOTES:

- LHR door shown. Preparation is typical for both door hands.
- Minimum Stile width:
 - 4 1/2" for double doors & SVR with double door strike.
 - 4 1/2" for single doors with standard 5/8" stop.
- Prepare mounting holes when installing the device.
- Provide door stiffeners as needed to prevent door collapse due to installation with power tools, door use, or abuse.
- Provide frame stiffeners as needed for rim strike. Unreinforced frames require blind rivet nuts (by others) to mount the strike.
- Dimension from door face.
- Device mount (end cap bracket) to hinge stile (not shown) requires hole location and preparation during device installation.
- For outside trim preparation see appropriate trim template.
- Recommended height may be determined by design spec's.
- Device mounting holes (2 places)
 - Metal door: 1/4"-20 Tap (std.).
 - Wood door (solid core): Pre-drill ϕ 1/8" holes.
 - SNB: ϕ 5/16" inside door face, ϕ 3/8" outside door face.
 - Trim: ϕ 5/16" inside door face, ϕ 1/2" outside door face.
 - Check building and fire codes to see if your application requires the use of SNB (sleeve nuts and bolts).
- Trim Tailpiece hole:
 - For BE, CE & NL trim: ϕ 1/2" (thru hole)
 - Dummy trim: not required
- This hole MUST be field located using physical part as template, after installation is complete and device is fully operational.
- Strike mounting holes (2 places)
 - Metal Frame: 1/4"-20 Tap (std.).
 - Wood Frame: Pre-drill ϕ 1/8" holes.
- 1-7/8" Minimum recommended (2-1/4" standard frame).
- Per ANSI/SDI A250.8, single door is 1/8", pairs of doors 3/16" \pm 1/16", and fire rated pair 1/8" \pm 1/16". Consult design spec's before preparing doors.
- 5/8" typical for hollow metal frames, 1/2" typical for wood frames. Consult design spec's before preparing doors.



**STRIKE PREPARATION
DETAIL**

