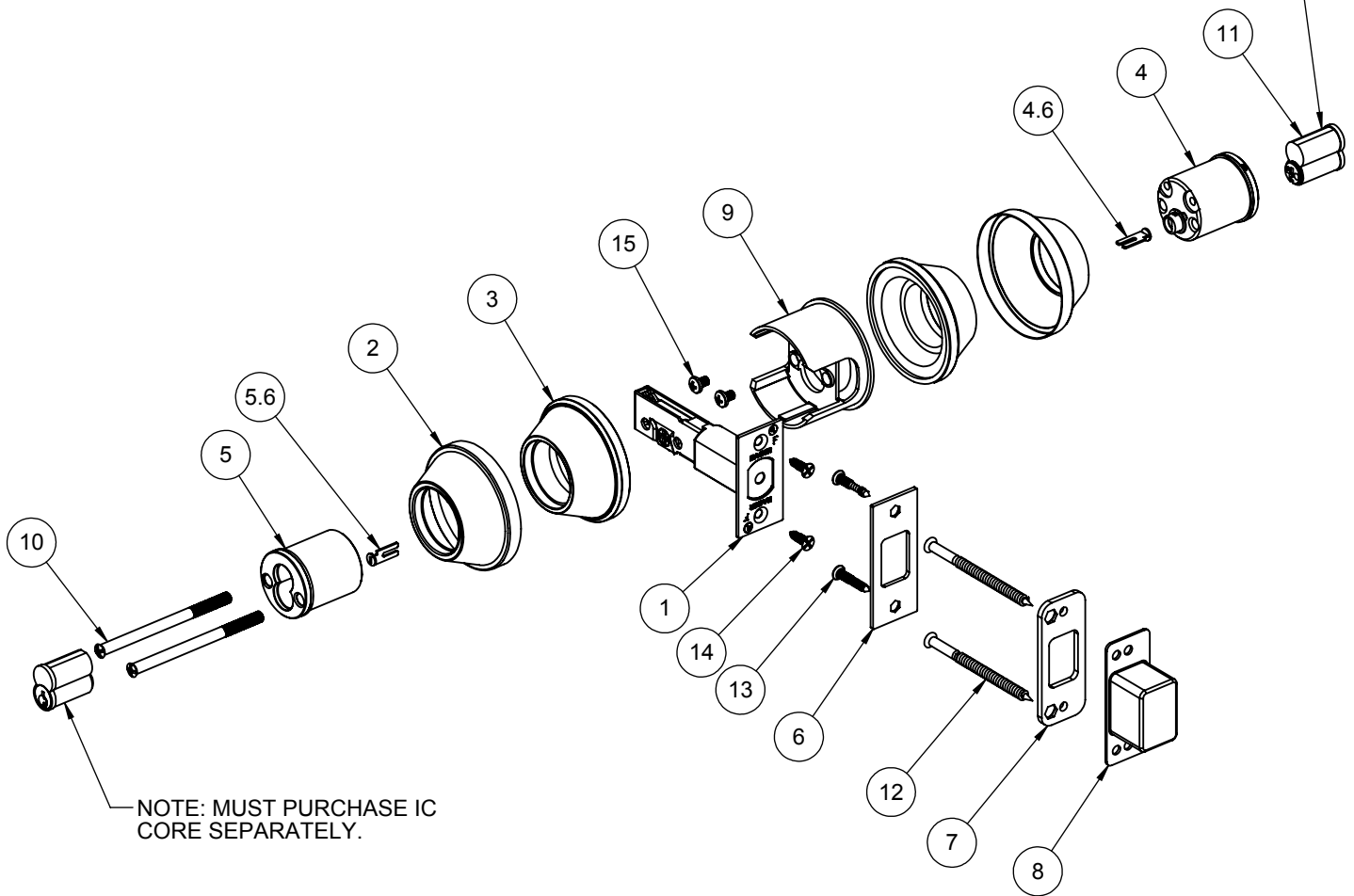


ITEM NO.	FILE NAME	DESCRIPTION	QTY.
1	S-LS00007	3940 DEADBOLT LATCH (2-3/4" BACKSET)	1
2	S-LS00728	CYLINDER ROSE	2
3	S-LS00726	CYLINDER ROSE LINER	2
4	S-LS00718	EXTERIOR DOUBLE CYLINDER HOUSING - IC	1
4.6	S-LS00606	TAILPIECE (2-639-7091)	1
5	S-LS00718	INTERIOR DOUBLE CYLINDER HOUSING - IC	1
5.6	S-LS00606	TAILPIECE (2-639-7091)	1
6	S-LS00723	DEADBOLT STRIKE	1
7	S-LS00724	DEADBOLT WOOD REINFORCER	1
8	S-LS00725	DEADBOLT DUST BOX	1
9	S-LS00379	IC CORE CYLINDER FIRE SHIELD	1
10	S-LS00884	CUSTOM #12-24 x 3-1/4"OPHMS	2
11	S-LS00550	INTERCHANGEABLE CORE	2
12	S-LS00885	CUSTOM #10 X 3" FPHWS	2
13	S-LS00882	#8 X 1-1/4" FPH COMBO SCREW	2
14	S-LS00882	#8 X 3/4" FPH COMBO SCREW	2
15	pan cross head_ai	#8-32 X 1/4" PHMS	2

NOTE: MUST PURCHASE IC CORE SEPARATELY.



PROPRIETARY & CONFIDENTIAL
 THE INFORMATION CONTAINED IN THIS DRAWING IS THE SOLE PROPERTY OF HAGER COMPANIES. ANY REPRODUCTION IN PART OR AS A WHOLE WITHOUT THE WRITTEN PERMISSION OF HAGER COMPANIES IS PROHIBITED.

HAGER RESERVES THE RIGHT TO MAKE DESIGN CHANGES WITHOUT NOTICE. CALL HAGER ENGINEERING AT 1-800-325-9995 FOR THE LATEST REVISION DATE OF TEMPLATE.

MATERIAL	Material <not specified>
FINISH	-
DO NOT SCALE DRAWING	

DRAWN	MRJ	9/9/2009
ENG. APPR.	-	-
TOLERANCES:		
FRACTIONAL: ±0.015"		
ANGULAR: MACH: ± 1° BEND: ±1°		
TWO PLACE DECIMAL: ±0.01"		
THREE PLACE DECIMAL: ±0.004"		

3214		
GRADE 2 - DOUBLE CYLINDER IC DEADBOLT		
SIZE	DWG. NO.	REV.
A	S-LS00827	-
SCALE: 1:4	WEIGHT: 2.45	SHEET 1 OF 1