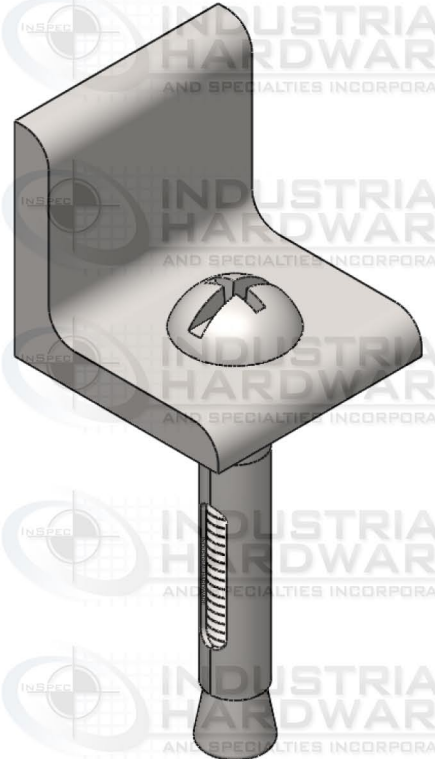
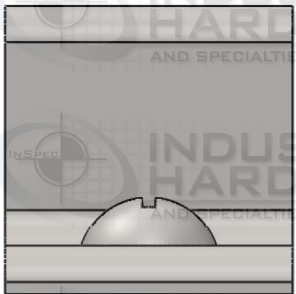
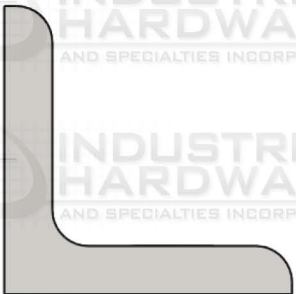
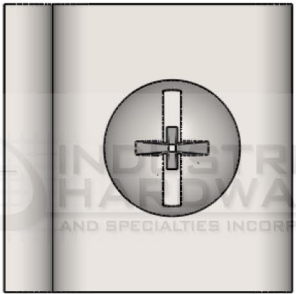


ZONE		REV.	REVISIONS	DATE	APPROVED
			DESCRIPTION		



3/16"

1/4"

2-3/4"

PROPRIETARY AND CONFIDENTIAL

THIS DRAWING AND ITS CONTENT IS THE SOLE PROPERTY OF INDUSTRIAL HARDWARE & SPECIALTIES, INCORPORATED.

ANY REPRODUCTION IN PART OR AS A WHOLE WITHOUT THE WRITTEN PERMISSION OF INDUSTRIAL HARDWARE & SPECIALTIES, INC. IS STRICTLY PROHIBITED. INSPEC AND TOSPEC INDICIA ARE REGISTERED AND PROTECTED TRADEMARKS WITH THE UNITED STATES PATENT & TRADEMARK OFFICE. MODIFICATION, USE OR REMOVAL WITHOUT WRITTEN AUTHORIZATION WILL BE DEEMED AN INTENTIONAL VIOLATION OF COPYRIGHT PROTECTIONS.

DIMENSIONS ARE IN INCHES
 TOLERANCES:
 FRACTIONAL $\pm 1/64"$
 ANGULAR: MACH $\pm 1^\circ$ BEND $\pm 1^\circ$
 TWO PLACE DECIMAL $\pm .01"$
 THREE PLACE DECIMAL $\pm .005"$
 CONCENTRICITY T.I.R. = $.005"$

MATERIAL
Steel
 FINISH
Zinc CR+3 (RoHS)

NEXT ASSY USED ON APPLICATION

DO NOT SCALE DRAWING

NAME	DATE
DRAWN	
CHECKED	
ENG APPR.	
MFG APPR.	
Q.A.	

COMMENTS:



17-B Kentucky Avenue
 Paterson, New Jersey 07503
 T: 973-684-4010 F: 973-684-3095
 e-mail: sales@industrialhardware.com
 www.industrialhardware.com

SIZE	DWG. NO.	REV.
A	20A-1L07C	
SCALE: 1:2	WEIGHT:	SHEET 1 OF 1