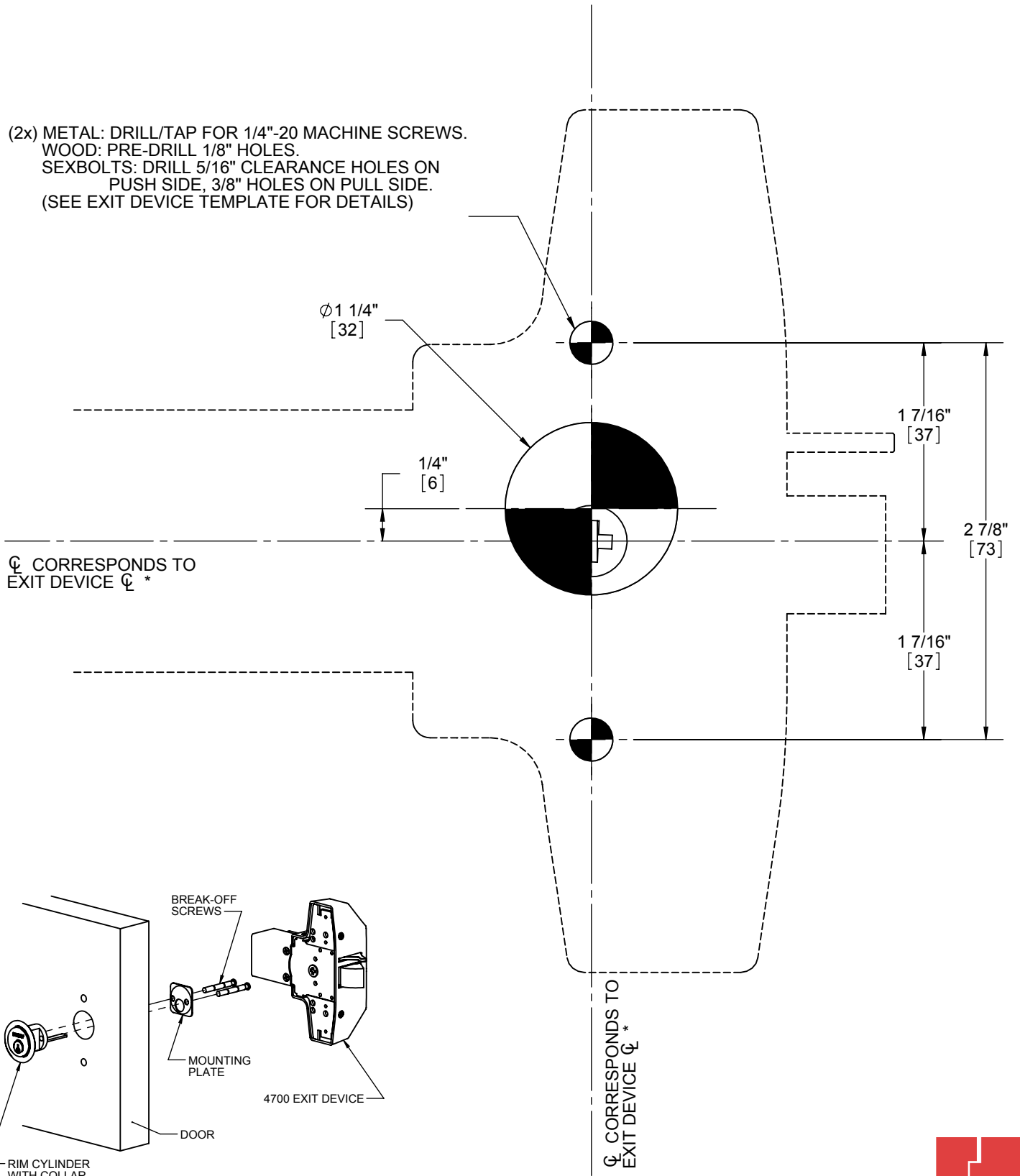


4700 EXIT DEVICE WITH RIM CYLINDER TEMPLATE

(2x) METAL: DRILL/TAP FOR 1/4"-20 MACHINE SCREWS.
 WOOD: PRE-DRILL 1/8" HOLES.
 SEXBOLTS: DRILL 5/16" CLEARANCE HOLES ON
 PUSH SIDE, 3/8" HOLES ON PULL SIDE.
 (SEE EXIT DEVICE TEMPLATE FOR DETAILS)



* SEE EXIT DEVICE INSTRUCTIONS FOR ALIGNMENT DETAILS.

HOLE LOCATIONS
 PRIMARY DIMENSIONS SHOWN IN INCHES,
 DIMENSIONS IN [] ARE MILLIMETERS.

