

By-Pass



Hager offers a full-range of trouble-free, sturdy and quiet motion by-pass Sliding Door Hardware sets. Featuring heavy-duty aluminum tracks and a selection of decor complementing fascia designs, Hager's by-pass components and door hardware sets can be ordered for 2-, 3- and 4-door configurations to fit rough openings from 4 ft to 8 ft wide.

Hager's Sliding Door Hardware sets are built to last and simple to install. They support doors from 50 lb to 275 lb capacity and offer an ideal space-saving solution for closets, pantries, room-dividing doors, etc.

By-pass door hardware is available in kits, track, or individual components.

**FOR ANY HAGER PURCHASE CONTACT INDUSTRIAL HARDWARE & SPECIALTIES INC.
CALL 1800-684-4010**



2016
www.hagerco.com



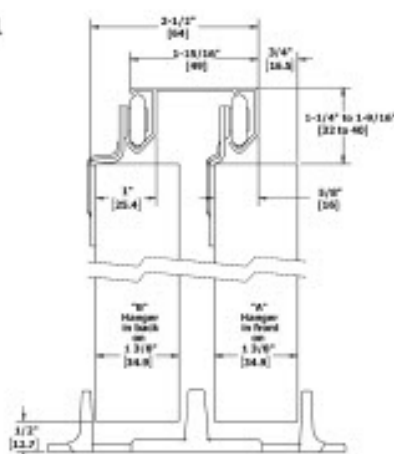
BY-PASS - 9514 & 9583 PACKAGED BY-PASS SETS

FEATURES

- Aluminum track with and hardware
- Conforms to ANSI A156.14
- Type: D8742

SPECIFICATIONS

- For 3/4" - 1-3/8" (19 mm - 35 mm) thick doors
- Up to 60 lbs (27 kg) per door with single wheel hangers 9400 or 9401
- Up to 75 lbs (34 kg) per door with twin wheel hangers 9202 or 9203, sold separately
- Track is extruded aluminum jump-proof style with "V" shaped rails
- Hangers have 7/8" (22 mm) diameter wheels



Interchanges with Stanley 40-3230, 40-3240, 40-3260, BP60/BP75-02 and Cox 12-200 Series.

Part Number	Description
9514 Packaged Set (for two doors)	
Includes one (1) 9810 track and one (1) 9814 parts bag	
9514-48	By-Pass Set - For two 24" (610 mm) doors
9514-60	By-Pass Set - For two 30" (762 mm) doors
9514-72	By-Pass Set - For two 36" (914 mm) doors
9514-96	By-Pass Set - For two 48" (1219 mm) doors
9583 Packaged Set (for three doors)	
Includes one (1) 9810 track, two (2) 9400 hangers, four (4) 9401 hangers, two (2) 9353 guides, and three (3) 2610 pulls	
9583-96	By-Pass Set - For three 32" (813 mm) doors

Use the chart below to select the correct hanger offset combination for your application.

Side Mount Selection Chart				
Door Thickness	3/4" (19 mm)	1" (25.4 mm)	1-1/8" (29 mm)	1-3/8" (35 mm)
Front Hanger	B	B	A or B	A
Rear Hanger	A	A	Same as front	B
Door Gap	3/4"	1/2"	11/16"	9/16"
	Item #	Description	Notes:	
Hanger A	9200	Single wheel hanger-offset A	Hanger is stamped "A" or "B" for easy identification	
Hanger B	9201	Single wheel hanger-offset B	For consideration for 9514, 9583, 9614, 9683, 9844 and 9845 By Pass packaged sets.	
Hanger B*	9202	Twin wheel hanger-offset B	Hanger mount selection example:	
Hanger A*	9203	Twin wheel hanger-offset A	Door thickness: 1-1/8" Door weight: 60 lbs	
Hanger A	9400	Micro cam hanger-offset A	Select single, twin or micro cam hanger	
Hanger B	9401	Micro cam hanger-offset B	Front hanger: 9400 Rear hanger: 9400	

* For use with doors 60 -75 lbs., sold separately

FOR ANY HAGER PURCHASE CONTACT INDUSTRIAL HARDWARE & SPECIALTIES INC.
CALL 1800-684-4010



BY-PASS - 9514 & 9583 PACKAGED SET COMPONENTS



9810

Aluminum Track

Materials: Extruded aluminum
 Gauge: 0.050" (1.3 mm) thick
 Track: 1" x 2" (25 mm x 51 mm)
 Lengths: 48" (1219 mm) to 144" (3658 mm)

Notes:

- For doors up to 75 lbs (34 kg)
- One piece track



9353

Adjustable Door Guide

Materials: High density polyethylene
 Notes:

- Adjustable guide from 3/4" (19 mm) to 1-3/8" (35 mm)
- Included with 9841 parts bag



9814

Parts Bag

Includes two (2) 9400 hangers, two (2) 9401 hangers, two (2) 2610-US3 pulls, and one (1) 9353 guide



9841

Optional Parts Bag

• Includes four (4) 9401 hangers, two (2) 9865 pulls, one (1) 9351 guide
 • For use with 1" - 1-1/8" thick doors



9400* | 9401**

Micro Adjust Hanger

Materials: Zinc plated steel with molded Celcon wheels
 Gauge: 0.075" (2 mm)
 Wheel: 7/8" (22 mm) diameter

Notes:

- Side mounted with precise cam adjustment
- For use on doors weighting up to 60 lbs (27 kg)
- For use with 9810, 9820, and 9840 track
- Hanger is stamped "A" or "B" for easy identification
- * 9400 is A offset of 3/8" (9.5 mm)
- ** 9401 is B offset of 11/16" (17.5 mm)



9865

Flush Cup Pull

Overall Diameter: 1-31/32" (50 mm)
 Finger Pull Diameter: 1-19/32" (41 mm)
 Depth: 11/32" (9 mm)
 Projection: 5/64" (2 mm)
 Materials: Tan color ABS plastic

Notes:

- Built-in prong design eliminates the need for screws or brads



2610

Flush Cup Finger Pull

Overall Diameter: 31/32" (25 mm)
 Finger Pull Diameter: 3/4" (19 mm)
 Depth: 5/16" (8 mm)
 Projection: 1/32" (.8 mm)
 Materials: Solid brass
 Finishes: US3, US4, US5, US10A, US15, US15A, US26, US26D, ABA

Notes:

- Built-in prong design eliminates the need for screws or brads



9351

Guide

Materials: High density polyethylene
 Guide: 4-9/16" x 1" x 11-3/16" (116 mm x 25 mm x 46 mm)

Notes:

- One piece fixed guide for 1-3/8" (35 mm) doors
- Included with 9841 parts bag

Optional Components

9200 9201	Hanger
9202 9203	Hanger
2630	Pull
9909	Adjustable Guide
9354	3/4" Riser
9815	Bumper Stop
9880	Door Stop

For optional components see pages 59-63

FOR ANY HAGER PURCHASE CONTACT INDUSTRIAL HARDWARE & SPECIALTIES INC.





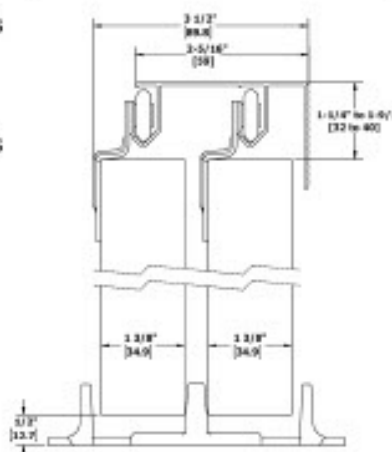
BY-PASS - 9614 & 9683 PACKAGED SETS

FEATURES

- Aluminum track with 1-3/4" (44 mm) fascia and hardware
- Conforms to ANSI A156.14
- Type: D8742

SPECIFICATIONS

- For doors up to 1-3/8" (35 mm) thick
- Up to 60 lbs (27 kg) per door with single wheel 9201 or 9401 hangers
- Up to 75 lbs (34 kg) per door with twin wheel 9202 hangers
- Track is extruded aluminum jump-proof style with integral 1-3/4" (44 mm) fascia
- Hangers have one or two side mounted 7/8" (22 mm) diameter wheels
- Uses all B offset hangers
- Grooved fascia, ideal for painting



Interchanges with Stanley 8139 track, BP75-06, 8400 Series sets, 40-3340 and Cox 12-400 Series.

Part Number	Description
9614 Packaged Set (for two doors) Includes one (1) 9820 track and one (1) 9540 parts bag: (4) 9401 hangers, two (2) 2610-US3 pulls, one (1) 9351 floor guide	
9614-48	By-Pass Set - For two 24" (610 mm) door hangers, two (2) 2610 - US3
9614-60	By-Pass Set - For two 30" (762 mm) door pulls, one (1) 9351 floor guide
9614-72	By-Pass Set - For two 36" (914 mm) doors
9683 Series Set (for three doors) Includes one (1) 9820 track and six (6) 9401 hangers, two (2) 9351 guides, and three (3) 2610 pulls	
9683-96	By-Pass Set - For three 32" (813 mm) doors

Use the chart below to select the correct hanger offset combination for your application.

Side Mount Selection Chart				
Door Thickness	3/4" (19 mm)	1" (25.4 mm)	1-1/8" (29 mm)	1-3/8" (35 mm)
Front Hanger	B	B	A or B	A
Rear Hanger	A	A	Same as front	B
Door Gap	3/4"	1/2"	11/16"	9/16"
	Item #	Description	Notes:	
Hanger A	9200	Single wheel hanger-offset A	Hanger is stamped "A" or "B" for easy identification	
Hanger B	9201	Single wheel hanger-offset B	For consideration for 9514, 9583, 9614, 9683, 9844 and 9845 By-Pass packaged sets.	
Hanger B	9202	Twin wheel hanger-offset B	Hanger mount selection example:	
Hanger A	9203	Twin wheel hanger-offset A	Door thickness: 1-1/8" Door weight: 60 lbs	
Hanger A	9400	Micro cam hanger-offset A	Select single, twin or micro cam hanger	
Hanger B	9401	Micro cam hanger-offset B	Front hanger: 9400 Rear hanger: 9400	

FOR ANY HAGER PURCHASE CONTACT INDUSTRIAL HARDWARE & SPECIALTIES INC.
CALL 1800-684-4010



BY-PASS - 9614 & 9683 TRACK COMPONENTS



- 9820**
Aluminum Track with 1-3/4\"
(44 mm) Fascia
- Materials: Extruded aluminum
Gauge: 0.050" (1.3 mm)
Track: 1-3/4" x 3" (44 mm x 76 mm)
Lengths: 48" (1219 mm) to 144" (3658 mm)
- Notes:
- For doors up to 75 lbs (34 kg)
 - For use on doors up to 1-3/8" (35 mm)
 - For use with 7/8" (22 mm) diameter hanger wheels
 - One piece track with built-in grooved fascia



- 9351**
Guide
- Materials: High density polyethylene
Guide: 4-9/16" x 1" x 11-3/16" (116 mm x 25 mm x 46 mm)
- Notes: One piece fixed guide for 1-3/8" (35 mm) doors

Optional Part Bags



- 9544**
Parts Bag
- Includes four (4) 9202 hangers, two (2) 2630-US3 pulls, and one (1) 9351 guide



- 9540**
Parts Bag
- Includes four (4) 9401 hangers, two (2) 2610-US3 pulls, and one (1) 9351 guide



- 9841**
Parts Bag
- Includes four (4) 9401 hangers, two (2) 9865 pulls, and one (1) 9351 guide



- 9401 \"B\" Offset Hanger**
Micro Adjust Hanger
- Materials: Zinc plated steel with molded Celcon wheels
Gauge: 0.075" (2 mm)
Wheel: 7/8" (22 mm) diameter
- Notes:
- Side mounted with precise cam adjustment
 - For use on doors weighting up to 60 lbs (27 kg)
 - For use with 9810, 9820, and 9840 track



- 9842**
Parts Bag
- Includes four (4) 9401 hangers, two (2) 2630-US3 pulls, and one (1) 9351 guide



- 9843**
Parts Bag
- Includes four (4) 9202 hangers, two (2) 9865 pulls, and one (1) 9351 guide



- 2610**
Flush Cup Finger Pull
- Overall Diameter: 31/32" (25 mm)
Finger Pull Diameter: 3/4" (19 mm)
Depth: 5/16" (8 mm)
Projection: 1/32" (.8 mm)
Materials: Solid brass
Finishes: US3
- Notes: Built-in prong design eliminates the need for screws or brads

Optional Components

- | | |
|-------------|------------------|
| 9200 9201 | Hanger |
| 9202 9203 | Hanger |
| 2630 | Pull |
| 9865 | Pull |
| 9909 | Adjustable Guide |
| 9353 | Adjustable Guide |
| 9354 | 3/4" Riser |
| 9815 | Bumper Stop |
| 9880 | Door Stop |

For optional components see pages 59-63

FOR ANY HAGER PURCHASE CONTACT INDUSTRIAL HARDWARE & SPECIALTIES INC.





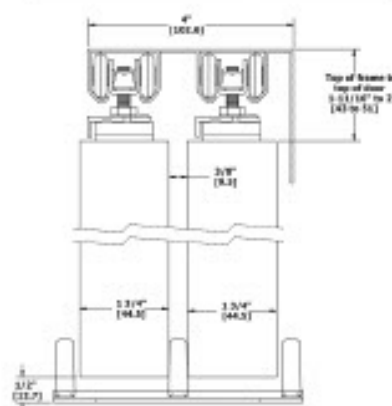
BY-PASS - 9673 & 9674 PACKAGED SETS

FEATURES

- Heavy duty aluminum track with 2-5/8" (66 mm) Built-In Grooved Fascia and Hardware
- Conforms to ANSI A156.14
- Type: D8751, D8752

SPECIFICATIONS

- For doors 1-3/8" - 1-3/4" (35 mm - 44 mm) thick
- 9673 packaged sets for up to 125 lbs (57 kg) per door
- 9674 packaged sets for up to 150 lbs (68 kg) per door
- Track is extruded aluminum jump-proof style with "V" shaped rails and integral 2-5/8" (66 mm) fascia
- Hangers have four (4) 7/8" (22 mm) diameter wheels
- Integral 2-5/8" grooved fascia
- Grooved fascia, ideal for painting



Interchanges with Stanley 51700F Series/BP150F; Johnson 134F/138F; and Lawrence F581 track, HDF520 Series sets.

Part Number	Description
9673 Packaged Set	
Includes one (1) 9603 track and one (1) 9679 parts bag: four (4) 9605 hangers, four (4) 9610 plates, and one (1) 9909 guide	
For doors up to 125 lbs (57 kg)	
9673-48	By-Pass Set - For two 24" (610 mm) doors
9673-60	By-Pass Set - For two 30" (762 mm) doors
9673-72	By-Pass Set - For two 36" (914 mm) doors
9673-96	By-Pass Set - For two 48" (1219 mm) doors
9674 Series Set	
Includes one (1) 9603 Packaged Set track and one (1) 9680 parts bag: four (4) 9606 hangers, four (4) 9610 plates, and one (1) 9909 guide	
For doors up to 150 lbs (68 kg)	
9674-48	By-Pass Set - For two 24" (610 mm) door
9674-60	By-Pass Set - For two 30" (762 mm) door
9674-72	By-Pass Set - For two 36" (914 mm) door
9674-96	By-Pass Set - For two 48" (1219 mm) door

FOR ANY HAGER PURCHASE CONTACT INDUSTRIAL HARDWARE & SPECIALTIES INC.
CALL 1800-684-4010



BY-PASS - 9673 & 9674 TRACK COMPONENTS



9603

Heavy Duty Aluminum Double Box Track

Materials: Extruded aluminum
 Gauge: 0.050" (1.3 mm)
 Track: 1-1/16" x 4" (27 mm x 102 mm)
 Lengths: 48" (1219 mm) to 144" (3658 mm)

Notes:

- Grooved fascia for painting
- Jump proof double twin channel design
- One piece track with built-in grooved fascia



9909

Adjustable Guide

Materials: Steel with bright zinc finish
 Posts: Molded Celcon/Nylon
 Gauge: 0.060" (1.5 mm)
 Guide: 4-7/8" x 1-5/8" x 1-3/16" (124 mm x 41 mm x 30 mm)
 For doors 3/4" to 1-3/4" (19 mm to 44 mm) thick and up to 275 lbs (125 kg)

Notes:



9679

Parts Bag

For 125 lbs (57 kg) per door - Includes four (4) 9605 hangers with quick release top mount plate, four (4) 9610 plates, and one (1) 9909 guide



9680

Parts Bag

For 150 lbs (68 kg) doors - Includes four (4) 9606 ball bearing hangers, four (4) 9610 plates, and one (1) 9909 guide
 Note: Up to 125 lbs (57 kg) per door



9605

4-Wheel Hanger

For 125 lbs (57 kg) doors
 Materials: Steel with brass-tone dichromate finish
 Wheel: 7/8" (22 mm) diameter
 Notes:

- Wheels are self aligning to allow consistent contact with track
- Pre-lubricated Celcon wheels
- Up to 125 lbs (57 kg) per door
- Use in conjunction with 9601, 9602 or 9603 track



9606

4-Wheel Ball Bearing Hanger

For 150 lbs (68 kg) doors
 Materials: Steel with brass-tone dichromate finish
 Wheel: 7/8" (22 mm) diameter
 Notes:

- Wheels are self aligning to allow consistent contact with track
- Pre-lubricated Celcon wheels mounted on steel ball bearing shafts
- For doors up to 150 lbs (68 kg)
- Used in conjunction with 9607, 9608 or 9610 top door plate and 9599, 9601 or 9602 track



9610

Replacement Top Mount Plate

Materials: Bright zinc plated steel
 Gauge: 1/8" (3 mm)
 Size: 1-3/8" (35 mm) x 2-13/16" (72 mm)

Notes: Replacement for four wheel hangers 9605, 9606, 9575, 9824, 9825 and 9827

Optional Components

2610	Pull
2630	Pull
9865	Pull
9610	Top Mount Plate
9351	Adjustable Guide
9353	Adjustable Guide
9354	3/4" Riser
9815	Bumper Stop
9880	Door Stop

For optional components see pages 59-63

FOR ANY HAGER PURCHASE CONTACT INDUSTRIAL HARDWARE & SPECIALTIES INC.





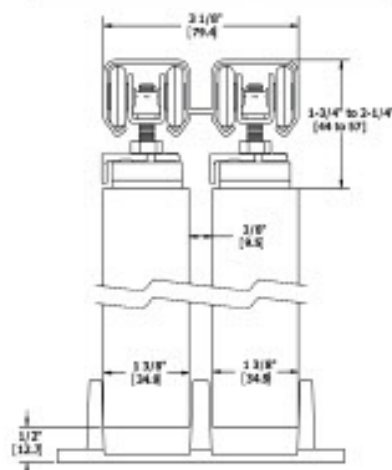
BY-PASS - 9675 & 9676 PACKAGED SETS

FEATURES

- Heavy duty aluminum double box track and hardware
- Conforms to ANSI A156.14
- Type: D8731, D8741, D8751

SPECIFICATIONS

- For doors 1-3/8" - 1-3/4" (35 mm - 44 mm) thick
- Up to 100 lbs (45 kg) with 9572 hangers
- 9675 packaged sets for up to 125 lbs (57 kg) per door
- 9676 packaged sets for up to 150 lbs (68 kg) per door
- Track is extruded aluminum jump-proof style with "V" shaped rails
- Hangers have four (4) 7/8" (22 mm) diameter wheels



Interchanges with Stanley 1755, 40-3664, 40-3855/BP150; Johnson 134F/138F; Grant 7000 Series, Cox 15-220 Series; and Lawrence 581 track, HD520 hardware.

Part Number	Description
9675 Packaged Set	
Includes one (1) 9602 track and one (1) 9679 parts bag: four (4) 9605 hangers, four (4) 9609 plates, and one (1) 9909 guide For doors up to 125 lbs (57 kg) per door	
9675-48	By-Pass Set - For two 24" (610 mm) doors
9675-60	By-Pass Set - For two 30" (762 mm) doors
9675-72	By-Pass Set - For two 36" (914 mm) doors
9675-96	By-Pass Set - For two 48" (1219 mm) doors
9676 Packaged Set	
Includes one (1) 9602 track and one (1) 9680 parts bag: four (4) 9606 hangers, four (4) 9609 plates, and one (1) 9909 guide For doors up to 150 lbs (68 kg) per door	
9676-48	By-Pass Set - For two 24" (610 mm) door
9676-60	By-Pass Set - For two 30" (762 mm) door
9676-72	By-Pass Set - For two 36" (914 mm) door
9676-96	By-Pass Set - For two 48" (1219 mm) door

FOR ANY HAGER PURCHASE CONTACT INDUSTRIAL HARDWARE & SPECIALTIES INC.
CALL 1800-684-4010



BY-PASS - 9675 & 9676 TRACK COMPONENTS



9602 Heavy Duty Aluminum Double Box Track

Materials: Extruded aluminum
Gauge: 0.050" (1.3 mm) thick
Track: 1-1/16" x 3-1/8"
(27 mm x 79 mm)
Lengths: 46" (1168 mm) to 142"
(3607 mm)
Notes: Jump proof double twin
channel design



9909 Adjustable Guide

Materials: Steel with bright zinc finish
Posts: Molded Celcon/Nylon
Gauge: 0.060" (1.5 mm)
Guide: 4-7/8" x 1-5/8" x 1-3/16"
(124 mm x 41 mm x 30 mm)
Notes: For doors 3/4" to 1-3/4"
(19 mm to 44 mm) thick and
up to 275 lbs (125 kg)



9679 Parts Bag

Includes four (4) 9605 hangers with quick
release top mount plate, and one (1)
9909 guide
Note: Up to 125 lbs (57 kg) per door



9680 Parts Bag

For 150 lbs (68 kg) doors - Includes four
(4) 9606 ball bearing hangers, four (4)
9610 plates, and one (1) 9909 guide
Note: Up to 125 lbs (57 kg) per door



9605 4-Wheel Hanger

For 125 lbs (57 kg) doors
Materials: Steel with brass-tone
dichromate finish
Wheel: 7/8" (22 mm) diameter
Notes:

- Wheels are self aligning to
allow consistent contact
with track
- Pre-lubricated Celcon wheels
- Up to 125 lbs (57 kg) per door
- Use in conjunction with
9601, 9602 or 9603 track



9606 4-Wheel Ball Bearing Hanger

For 150 lbs (68 kg) doors
Materials: Steel with brass-tone
dichromate finish
Wheel: 7/8" (22 mm) diameter
Notes:

- Wheels are self aligning to
allow consistent contact
with track
- Pre-lubricated Celcon
wheels mounted on steel
ball bearing shafts
- For doors up to 150 lbs (68 kg)
- Used in conjunction with
9607, 9608 or 9610 top
door plate and 9599, 9601
or 9602 track



9610 Replacement Top Mount Plate

Materials: Bright zinc plated steel
Gauge: 1/8" (3 mm)
Size: 1-3/8" (35 mm) x 2-13/16"
(72 mm)
Notes: Replacement for four
wheel hangers 9605, 9606,
9575, 9824, 9825 and 9827

Optional Components

9709	Fascia
2610	Pull
2630	Pull
9865	Pull
9610	Top Mount Plate
9351	Adjustable Guide
9353	Adjustable Guide
9354	3/4" Riser
9815	Bumper Stop
9880	Door Stop

For optional components see pages 59-63

FOR ANY HAGER PURCHASE CONTACT INDUSTRIAL HARDWARE & SPECIALTIES INC.





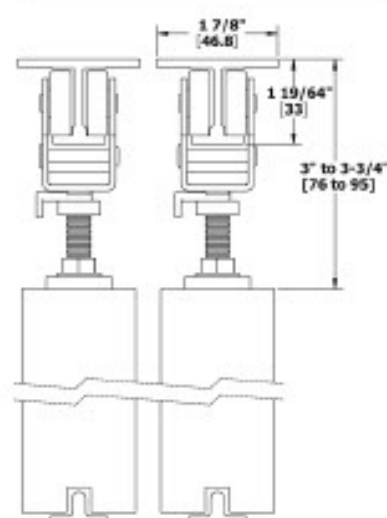
BY-PASS - 9110 & 9130 PACKAGED SETS

FEATURES

- Heavy duty aluminum I-beam track and hardware
- Conforms to ANSI A156.14/Type: D8731

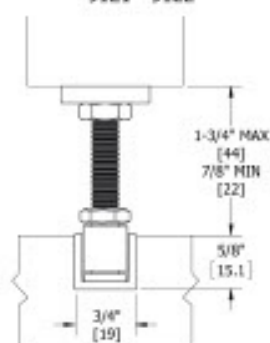
SPECIFICATIONS

- For doors 1" - 1-3/4" (25 mm - 45 mm) thick
- 9110 Series for doors weighing up to 175 lbs (79.5 kg) per door
- 9130 Series for doors weighing up to 275 lbs (124.7 kg) per door
- Track is extruded aluminum jump-proof style with "I" shaped rails
- Hangers have 1" (25 mm) diameter wheels with steel ball bearings
- Order two sets per opening per by pass



Interchanges with Grant 1210/1230 Series

Optional Bottom Track 9121 - 9122



Installation note: Clearance between door bottom and top of 9122 track must be 7/8" (22 mm) minimum to 1-3/4" (44 mm) maximum.

Part Number	Description
9110 Series Set	
Includes one (1) 9101 track and one (1) 9109 parts bag: two (2) 9102 hangers, and one (1) 9115 floor guide	
For doors up to 175 lbs (79.5 kg) per door	
9110-60	5' (1524 mm) By-Pass Set - For one 2'6" (762 mm) door
9110-72	6' (1839 mm) By-Pass Set - For one 3'0" (914 mm) door
9110-84	7' (2134 mm) By-Pass Set - For one 3'6" (1067 mm) door
9110-96	8' (2438 mm) By-Pass Set - For one 4'0" (1219 mm) door
9110-120	10' (3048 mm) By-Pass Set - For one 5'0" (1529 mm) door
9110-144	12' (3658 mm) By-Pass Set - For one 6'0" (1829 mm) door
9130 Series Set	
Includes one (1) 9101 track and one (1) 9129 parts bag: two (2) 9105 hangers, and one (1) 9115 floor guide	
For doors up to 275 lbs (125 kg)	
9130-60	5' (1524 mm) By-Pass Set - For one 2'6" (762 mm) door
9130-72	6' (1839 mm) By-Pass Set - For one 3'0" (914 mm) door
9130-84	7' (2134 mm) By-Pass Set - For one 3'6" (1067 mm) door
9130-96	8' (2438 mm) By-Pass Set - For one 4'0" (1219 mm) door
9130-120	10' (3048 mm) By-Pass Set - For one 5'0" (1529 mm) door
9130-132	11' (3353 mm) By-Pass Set - For one 5'6" (1676 mm) door
9130-144	12' (3658 mm) By-Pass Set - For one 6'0" (1829 mm) door

TRACKS - Two sets required for by-pass opening - 0.125" (3 mm) thick aluminum

Part Number	Description
Tracks for use with 9110 Series and 9130 Series	
9101-72	72" (1829 mm) Aluminum I-Beam Track
9101-84	84" (2134 mm) Aluminum I-Beam Track
9101-96	96" (2438 mm) Aluminum I-Beam Track
9101-120	120" (3048 mm) Aluminum I-Beam Track
9101-144	144" (3658 mm) Aluminum I-Beam Track
9101-192	192" (4877 mm) Aluminum I-Beam Track

FOR ANY HAGER PURCHASE CONTACT INDUSTRIAL HARDWARE & SPECIALTIES INC.

CALL 1 800-684-4010



BY-PASS - 9110 & 9130 TRACK COMPONENTS



9101

I Beam Track

Materials: Extruded aluminum
Gauge: 0.125" (3 mm)
Lengths: 72" (1829 mm) to 192"
(4877 mm)

Notes: Mounting holes are prepunched for ease of installation



9129

Parts Bag

Includes two (2) 9105 4-wheel hangers and one (1) 9115 floor guide



9109

Parts Bag

Includes two (2) 9102 2-wheel hangers and one (1) 9115 floor guide



9105

4 Wheel Hanger

Materials: Zinc plated steel
Wheels: Nylon with steel ball bearings
Hanger: 4" x 2" x 1-3/4"
(102 mm x 51 x 45 mm)
Bolt: 3/8" x 2-5/16"
(10 mm x 59 mm)
Top Plate: 1" x 3-1/2" x 3/16"
(25.4 mm x 89 mm x 5 mm)

Notes:

- Use with 9101 track, with doors weighing up to 275 lbs (125 kg)
- Four wheel hanger is self-aligning to allow consistent contact with track



9102

2 Wheel Hanger

Materials: Zinc plated steel
Wheels: Nylon with steel ball bearings
Hanger: 1-13/16" x 2" x 1-1/8"
(46 mm x 51 mm x 29 mm)

Bolt: 3/8" x 2-5/16"
(10 mm x 59 mm)
(Bolt not same as 9105)
Top Plate: 1" x 3-1/2" x 3/16"
(25 mm x 89 mm x 5 mm)

Notes: Use with 9101 track, with doors weighing up to 175 lbs (79 kg)



9115

Bottom Door Guide

Materials: Die cast zinc aluminum alloy
Guide: 7/8" x 3/4" x 3"
(22 mm x 19 mm x 76 mm)

Notes: Door bottom prep requires 1/4" (6 mm) wide kerf and 9/16" (14 mm) depth

Optional Components

9111	Fixed Bottom Door Guide
9113	Door Stop
9114	Bottom Guide Rail
9121	Bottom Door Guide
9122	Bottom Guide Channel
9909	Adjustable Guide

For optional components see pages 59-63

FOR ANY HAGER PURCHASE CONTACT INDUSTRIAL HARDWARE & SPECIALTIES INC.





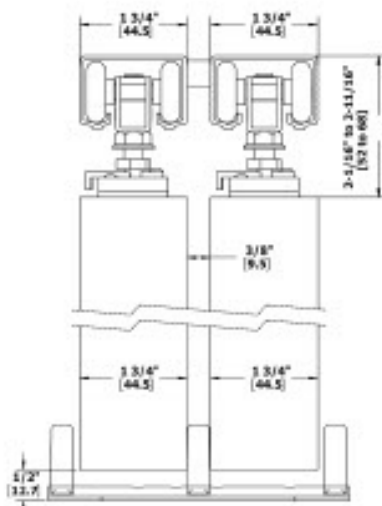
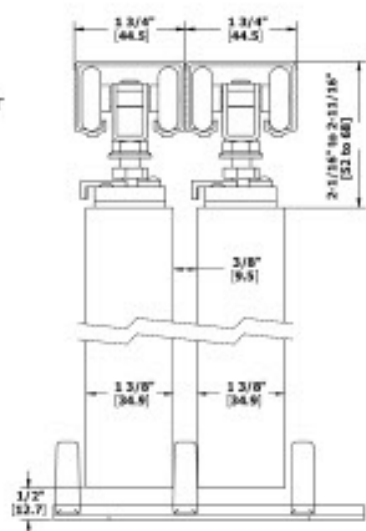
BY-PASS - 9611 & 9612 PACKAGED SETS

FEATURES

- Heavy duty aluminum box double track and hardware
- Conforms to ANSI A156.14
- Type: D8731, D8751

SPECIFICATIONS

- For doors 1-3/8" (35 mm) thick doors (top figure) - no spacer kit required
- For doors 1-3/4" (45 mm) thick with tracks spaced 3/8" (10 mm) apart using 9573 (bottom figure)
- 9611 Packaged Sets for doors weighing up to 150 lbs (68 kg) per door
- 9612 Packaged Sets for doors weighing up to 250 lbs (113 kg) per door
- Quick release hangers allow easy door hanging and removal
- Hangers have 1" (25 mm) diameter wheels
- Universal extruded aluminum track interchanges with Stanley and Johnson hangers and track

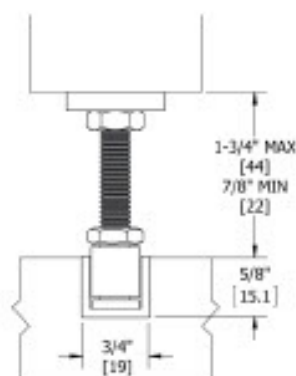


Interchanges with Stanley 125/250 Series and Johnson 100 Series

Part Number	Description
9611 Packaged Set	
Includes two (2) 9821 tracks and one (1) 9892 parts bag: four (4) 9824 hangers, one (1) 9909 guide, and one (1) 9573 spacer For doors up to 150 lbs (68 kg) per door	
9611-60	By-Pass Set - For two 30" (762 mm) doors
9611-72	By-Pass Set - For two 36" (914 mm) doors
9611-96	By-Pass Set - For two 48" (1219 mm) doors
9612 Series Set	
Includes two (2) 9821 tracks and one (1) 9893 parts bag: four (4) 9825 hangers, one (1) 9909 guide, and one (1) 9573 spacer For doors up to 250 lbs (113 kg) per door	
9612-60	By-Pass Set - For two 30" (762 mm) door
9612-72	By-Pass Set - For two 36" (914 mm) door
9612-96	By-Pass Set - For two 48" (1219 mm) door

Optional Bottom Track
9121 - 9122

Installation note: Clearance between door bottom and top of 9122 track must be 7/8" (22 mm) minimum to 1-3/4" (44 mm) maximum.



FOR ANY HAGER PURCHASE CONTACT INDUSTRIAL HARDWARE & SPECIALTIES INC.

CALL 1800-684-4010





BY-PASS - 9611 & 9612 TRACK COMPONENTS



9821

Aluminum Box Track

- Materials: Extruded aluminum
 Gauge: 0.06" (2 mm) thick
 Track: 1-5/8" x 1-1/16"
 (41 mm x 27 mm)
 Lengths: 59" (1499 mm) to 144"
 (3658 mm)
 Notes:
 - Jump proof twin channel design
 - Two-piece required for by-pass



9573

Celcon Plastic Spacer Kit

- Materials: Celcon plastic
 Notes:
 - Includes screws
 - Properly spaces two single tracks for 1-3/4" (44 mm) doors



9892

Parts Bag

- Includes four (4) 9824 4-wheel hangers with quick release top mount plate, one (1) 9909 guide, and one (1) 9573 spacer kit
 Note: Up to 150 lbs (68 kg) per door



9893

Parts Bag

- Includes four (4) 9825 4-wheel ball bearing hangers with quick release top mount plate, one (1) 9909 guide, and one (1) 9573 spacer kit
 Note: Up to 250 lbs per door



9824

4 Wheel Hanger with Quick Release Top Mount Plate

- Materials: Zinc plated steel
 Wheels: Self aligning to allow consistent contact with track
 Wheel: 1" (25 mm) diameter
 Notes:
 - Pre-lubricated Celcon wheels
 - Up to 150 lbs (68kg) per door
 - For use with 9821 track
 - Quick release feature allows easy door hanging and removal



9825

4 Wheel Ball Bearing Hanger with Quick Release Top Mount Plate

- Materials: Zinc plated steel
 Wheels: Self aligning to allow consistent contact with track with steel ball bearings
 Wheel: 1" (25 mm) diameter
 Notes:
 - Pre-lubricated Celcon wheels
 - Up to 250 lbs (113 kg) per door
 - For use with 9821 track
 - Quick release feature allows easy door hanging and removal



9909

Adjustable Guide

- Materials: Steel with bright zinc finish
 Posts: Molded Celcon/Nylon
 Gauge: 0.060" (1.5 mm)
 Guide: 4-7/8" x 1-5/8" x 1-3/16"
 (124 mm x 41 mm x 30 mm)
 Notes: For doors 3/4" to 1-3/4"
 (19 mm to 44 mm) thick and up to 275 lbs (125 kg)

Optional Components

- | | |
|------|----------------------|
| 9709 | Fascia |
| 2610 | Pull |
| 2630 | Pull |
| 9865 | Pull |
| 9121 | Bottom Door Guide |
| 9122 | Bottom Guide Channel |
| 9351 | Adjustable Guide |
| 9353 | Adjustable Guide |
| 9354 | 3/4" Riser |
| 9815 | Bumper Stop |
| 9880 | Door Stop |

For optional components see pages 59-63

FOR ANY HAGER PURCHASE CONTACT INDUSTRIAL HARDWARE & SPECIALTIES INC.





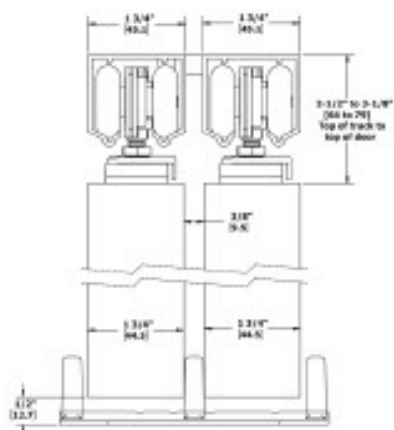
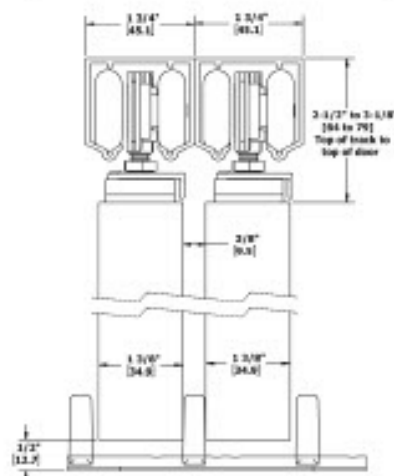
BY-PASS - 9875 PACKAGED SETS

FEATURES

- Heavy duty aluminum box double track and hardware
- Conforms to ANSI A156.14
- Type: D8731, D8751

SPECIFICATIONS

- For doors 1-3/8" - 1-3/4" (35 mm - 44 mm) thick (top figure)
- For doors 1-3/4" (44 mm) thick, tracks are spaced 3/8" (10 mm) apart using 9574 (bottom figure)
- Up to 250 lbs (113 kg) per panel
- Track is extruded aluminum jump-proof style with "V" shaped rails
- Hangers have four (4) 1-1/4" (32 mm) diameter wheels



Interchanges with Stanley 57/58.

Part Number	Description
9875 Series Set - Packaged set for doors up to 1-3/4" (44 mm) thick Includes two (2) 9801 tracks, four (4) 9827 hangers, one (1) 9574 spacer, and one (1) 9909 guide	
9875-48	By-Pass Set - 4' (1219 mm) opening for two doors
9875-60	By-Pass Set - 5' (1524 mm) opening for two doors
9875-72	By-Pass Set - 6' (1829) opening for two doors
9875-96	By-Pass Set - 8' (2438 mm) opening for two doors

TRACKS - 0.075" (1.9 mm) thick aluminum

Part Number	Description
Tracks for use with 9875 Series	
9801-72	72" (1829 mm) Aluminum Box Track
9801-96	96" (2438 mm) Aluminum Box Track
9801-120	120" (3048 mm) Aluminum Box Track
9801-144	144" (3658 mm) Aluminum Box Track
9801-192	192" (4877 mm) Aluminum Box Track

FASCIA - 2-3/4" (70 mm) high with 5/8" (16 mm) lip

Part Number	Description
9809-72	72" (1829 mm) 3-7/8" (98 mm) Aluminum Fascia
9809-96	96" (2438 mm) 3-7/8" (98 mm) Aluminum Fascia

FOR ANY HAGER PURCHASE CONTACT INDUSTRIAL HARDWARE & SPECIALTIES INC.
CALL 1800-684-4010



BY-PASS - 9875 TRACK COMPONENTS



9801
Heavy Duty Aluminum Box Track
 Material: Extruded aluminum
 Gauge: 0.075" (1.9 mm)
 Track: 1-5/8" x 1-3/4"
 (41 mm x 44 mm)
 Lengths: 72" (1829 mm) to 192"
 (4877 mm)
 Notes:

- For doors up to 250 lbs (113 kg)
- Jump proof twin channel design



9909
Adjustable Guide
 Materials: Steel with bright zinc
 Posts: Molded Celcon/Nylon
 Gauge: 0.060" (1.5 mm)
 Guide: 4-7/8" x 1-5/8" x 1-3/16"
 (124 mm x 41 mm x 30 mm)
 Notes: For doors 3/4" to 1-3/4"
 (19 to 44 mm) thick and
 up to 275 lbs (125 kg)



9809
Aluminum Fascia
 Materials: Extruded aluminum
 Gauge: 0.072" (1.8 mm)
 Lip: 1-3/4" (44 mm)
 Fascia: 3-7/8" (98 mm)
 Lengths: 72" (1829 mm) and
 96" (2438 mm) lengths
 Notes:

- Grooved fascia for painting
- Pre-punched holes for easy installation



9574
Track Spacer Kit
 Materials: Celcon plastic
 Notes:

- Includes screws
- Properly spaces two single tracks for 1-3/4" (44 mm) doors
- For use with 9801 track



9827
Four Wheel Ball Bearing Hanger
 Materials: Zinc plated steel
 Wheels: Self aligning to allow consistent contact with track
 Wheel: 1-1/4" (32 mm) diameter
 Notes:

- For doors up to 250 lbs (113 kg)
- Pre-lubricated Celcon wheels on steel shafts with steel ball bearings
- Ball bearing axles
- For use with 9801 Track

Optional Components

330D	Pocket Door Latch
330L	Pocket Door Privacy Latch
330M	Pocket Door Privacy Latch
2630	Flush Cup Pull
9881	Bumper
9883	Two Piece Pocket Door Guide
9884	Pocket Door Edge Pull
9815	Bumper Stop
9884	Pocket Edge Pull
9889	Non-Adjustable Floor Guide

For optional components see pages 59-63

FOR ANY HAGER PURCHASE CONTACT INDUSTRIAL HARDWARE & SPECIALTIES INC.





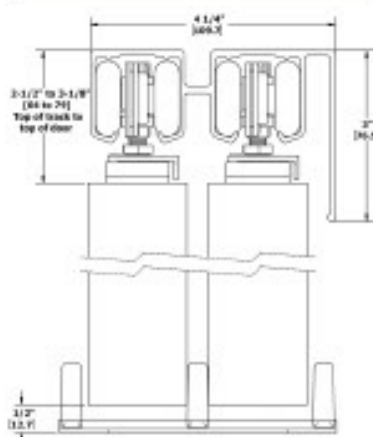
BY-PASS - 9885 & 9886 PACKAGED SETS

FEATURES

- Heavy duty aluminum double box track with 3-1/2" (89 mm) smooth fascia and hardware
- Conforms to ANSI A156.14
- Type: D8731, D8751

SPECIFICATIONS

- For doors 1-3/8" - 1-3/4" (35 mm - 44 mm) thick
- Up to 250 lbs (113 kg) per door
- Track is extruded aluminum jump-proof style with "V" shaped rails and integral 3-1/2" (88 mm) fascia
- Integral 3-1/2" (88 mm) smooth fascia
- Smooth fascia mount to be accompanied by decorative trim
- Hangers have four (4) 1-1/4" (32 mm) diameter wheels
- Smooth finish fascia



Part Number	Description
9885 Packaged Set for two doors up to 250 lbs. (117 kg.) each Includes one (1) 9803 track, four (4) 9827 hangers, one (1) 9909 guide, and one (1) 9880 bumper stop	
9885-48	By-Pass Set - 4' (1219 mm) opening for two doors
9885-60	By-Pass Set - 5' (1524 mm) opening for two doors
9885-72	By-Pass Set - 6' (1829 mm) opening for two doors
9885-96	By-Pass Set - 8' (2438 mm) opening for two doors
9886 Packaged Set for four doors up to 250 lbs. (113 kg.) each Includes eight (8) 9827 hangers, and one (1) 9880 door stop, and two (2) 9909 guide	
9886-96	By-Pass Set - 8' (2438 mm) opening for four doors

TRACKS - 0.06" (1.5 mm) thick aluminum

Part Number	Description
Tracks for use with 9800 Series	
9821-59	59" (1499 mm) Heavy Duty Aluminum Box Track
9821-71	71" (1803 mm) Heavy Duty Aluminum Box Track
9821-96	96" (2438 mm) Heavy Duty Aluminum Box Track
9821-144	144" (3658 mm) Heavy Duty Aluminum Box Track

FOR ANY HAGER PURCHASE CONTACT INDUSTRIAL HARDWARE & SPECIALTIES INC.
CALL 1800-684-4010



BY-PASS - 9885 & 9886 TRACK COMPONENTS



9803

Heavy Duty Aluminum Double Box Track with 3-1/2" (89 mm) Smooth Fascia

- Materials: Extruded aluminum
 Gauge: 0.075" (1.9 mm) thick
 Track: 3-1/2" x 4-1/2"
 (89 mm x 114 mm)
 Lengths: 48" (1219 mm) to 144"
 (3658 mm)
 Notes:
- Up to 250 lbs (113 kg) per door
 - Jump proof twin channel design
 - One piece track with built-in smooth fascia
 - Smooth fascia meant to be accompanied by decorative trim
 - Hager does not offer decorative trim



9909

Adjustable Guide

- Materials: Steel with bright zinc
 Posts: Molded Celcon/Nylon
 Gauge: 0.060" (1.5 mm)
 Guide: 4-7/8" x 1-5/8" x 1-3/16"
 (124 mm x 41 mm x 30 mm)
 Notes: For doors 3/4" to 1-3/4"
 (19 mm to 44 mm) thick and up to 275 lbs (125 kg)



9827

Four Wheel Ball Bearing Hanger

- Materials: Zinc plated steel
 Wheels: Self aligning to allow consistent contact with track
 Wheel: 1-1/4" (32 mm) diameter
 Notes:
- For doors up to 250 lbs (113 kg)
 - Pre-lubricated Celcon wheels on steel shafts with steel ball bearings
 - Ball bearing axles
 - For use with 9801 track



9880

Door Stop

- Materials: Zinc plated steel and rubber
 Gauge: 0.090" (2.3 mm)
 Stop: 1-1/4" x 1-1/4" x 7/8"
 (32 mm x 32 mm x 22 mm)
 Notes:
- For doors up to 175 lbs (79 kg)
 - Keeps rear door pull exposed
 - Mounts on door
 - Not included in sets

Optional Components

2610	Pull
2630	Pull
9865	Pull
9351	Adjustable Guide
9353	Adjustable Guide
9354	3/4" Riser
9815	Bumper Stop
9880	Door Stop
9268	By-Pass Door Keyed Lock
9900	Rev. Side Mount Bracket

FOR ANY HAGER PURCHASE CONTACT INDUSTRIAL HARDWARE & SPECIALTIES INC.

