

5400 Series



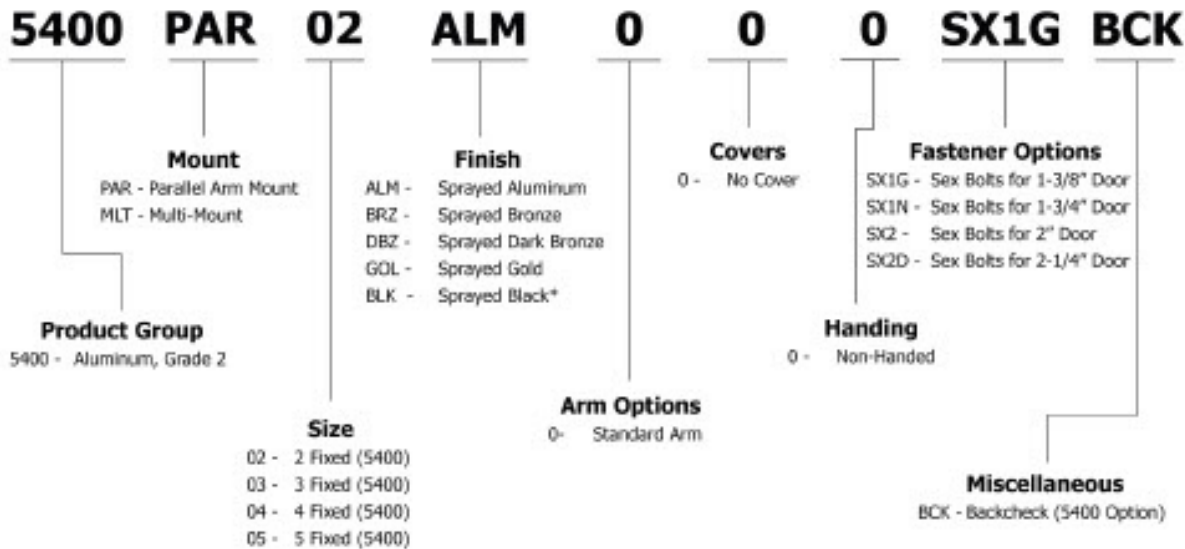
5400 Series Closers are ideal for light duty commercial applications. 5400 Series Closers have a heat treated steel piston and triple heat treated steel spindle. The closers are non-handed to permit installation on doors of either hand. These closers have fixed spring sizes. The maximum door weight for each of these closers is dependent on the size selected. Size 2 - 80 lbs, Size 3 - 135 lbs, Size 4 - 175 lbs and Size 5 - 200 lbs.



**FOR ANY HAGER PURCHASE CONTACT INDUSTRIAL HARDWARE & SPECIALTIES INC.
CALL 1800-684-4010**



5400 SERIES - HOW TO ORDER



Example of how to order: 5400M02ALM0PC

*Extended lead times for flat black finish and minimum order quantities may apply.

**5400 Series closers are sized 2, 3, 4 & 5.
Must know size when placing order.**

DOOR CLOSER SIZING CHART

Exterior (and Vestibule) Door Width

Minimum Door Width (24")

	24" (610 mm)	30" (762 mm)	36" (914 mm)	42" (1067 mm)	48" (1219 mm)
Regular Arm & Top Jamb	Size 3	Size 4	Size 5	-	-
Parallel Arm	Size 3	Size 4	Size 5	-	-

Interior Door Width

Minimum Door Width (24")

	24" (610 mm)	30" (762 mm)	34" (865 mm)	38" (965 mm)	48" (1219 mm)	54" (1372 mm)	60" (1524 mm)
Regular Arm & Top Jamb	-	Size 2	Size 3	Size 4	Size 5	Size 6	-
Parallel Arm	-	Size 2	Size 3	Size 4	Size 5	-	-

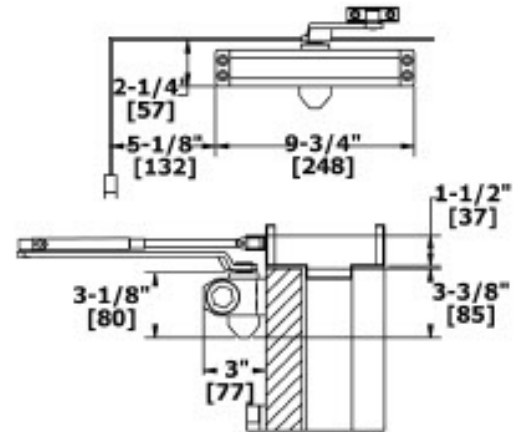
**FOR ANY HAGER PURCHASE CONTACT INDUSTRIAL HARDWARE & SPECIALTIES INC.
CALL 1800-684-4010**



5400 SERIES - APPLICATIONS

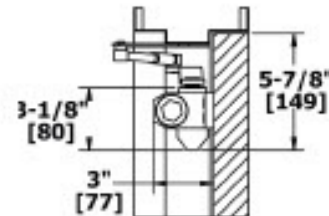
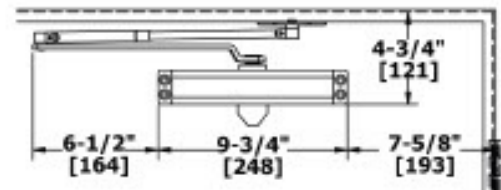
REGULAR ARM MOUNT

Opening:	Templating allows up to 180°
Frame Face:	1-1/2" (38 mm) minimum
Ceiling Clearance:	1-3/4" (44 mm) minimum
Top Rail:	2-1/4" (57 mm) minimum
Top Rail Clearance:	3-1/2" (89 mm) minimum



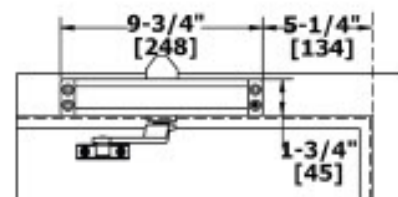
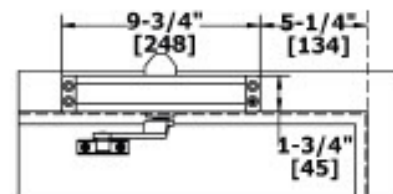
PARALLEL ARM MOUNT

Opening:	Templating allows up to 180°
Top Rail:	<ul style="list-style-type: none"> • 5/8" (16 mm) frame stop • 4-3/4" (121 mm) minimum
Top Rail Clearance:	5-3/4" (146 mm) minimum



TOP JAMB MOUNT

Opening:	Templating allows up to 180°
Frame Face:	1-3/4" (45 mm) minimum
Ceiling Clearance:	2-3/4" (70 mm) minimum
Top Rail:	1-7/8" (48 mm) minimum
Top Rail Clearance:	2-1/8" (54 mm) minimum



FOR ANY HAGER PURCHASE CONTACT INDUSTRIAL HARDWARE & SPECIALTIES INC.
CALL 1800-684-4010



5400 SERIES - GRADE 2 STANDARD DUTY SURFACE DOOR CLOSER

WARRANTY	Five-year warranty - maximum door weight size: 2 - 80 lbs 3 - 135 lbs 4 - 175 lbs 5 - 200 lbs
FEATURES	<ul style="list-style-type: none">• Ideal for light duty commercial applications• Standard package contains 5401 closer body, 5901 pinion cap, 5403 main arm assembly, 5404 standard screw pack, 5900 parallel arm bracket, and 5902 SNB screw pack for 1-3/4" (44 mm) door
Certification:	<ul style="list-style-type: none">• BHMA Certified ANSI A156.4, Sizes 2, 3, 4, 5 - Must specify• UL/cUL Listed for up to 3 hours• UL10C Positive Pressure Rated• UL10B Neutral Pressure Rated
Covers:	No Cover - Standard
Closer Body:	<ul style="list-style-type: none">• Aluminum alloy• The recommended temperature for prolonged use is between -40° F (-42° C) & 150° F (66° C)
Springs:	Double heat treated steel, tempered springs
Valves:	<ul style="list-style-type: none">• Adjustable latching and sweep speed valves• Adjustable backcheck valve - Optional• Staked valves - Standard
Handing:	Non-handed
Arms & Brackets:	<ul style="list-style-type: none">• Tri-Pack: Regular, Parallel Arm, and Top Jamb Mount - Standard• 15% power adjustment in standard arm for regular and top jamb mount



SPECIFICATIONS

Door Thickness:	<ul style="list-style-type: none">• 1-3/4" (44 mm) - Standard• 1-3/8" - 2-1/4" (36 mm - 57 mm) thick door - Optional
Fasteners:	<ul style="list-style-type: none">• Self-reaming, self-tapping wood and machine screws• Sex nuts and bolts
Notes:	<ul style="list-style-type: none">• Precision machined, heat treated steel piston• Triple heat treated steel spindle• Special templates available upon request by contacting Hager Companies Customer Service
FINISHES	<ul style="list-style-type: none">• ALM, BLK, BRZ, DBZ, GOL• Rust inhibiting primer - Standard

FOR ANY HAGER PURCHASE CONTACT INDUSTRIAL HARDWARE & SPECIALTIES INC.
CALL 1800-684-4010



5400 SERIES - ARMS & ACCESSORIES

SCREW PACKS



5403

Main Arm

- Non-handed
- Forged steel
- Mounts regular, parallel arm, or top jamb mount
- Add 5900 bracket for parallel arm mount



5404

Screw Pack - Standard

- Self-drilling wood screws
- Self-drilling machine screws
- For 5400 Series closer only



5401

Closer Body Only

- Aluminum alloy
- Full rack and pinion operation
- Triple heat treated steel spindle
- Sizes 2, 3, 4, and 5 available



5902

SNB Screw Pack - Standard

- Sex nuts and bolts for 1-3/4" (44 mm) doors
- Machine screws
- For use with 5200, 5300, 5400 Series closers only



5900

Parallel Arm Bracket

- Used to convert regular or top jamb arms to parallel arm application
- Supplied standard closers
- For use with 5200, 5300 and 5400 Series closer arms
- Includes screw pack



5903

SNB Screw Pack - Optional

- Sex nuts and bolts for 1-3/8" (35 mm) doors
- Machine screws
- For use with 5200, 5300, 5400 Series closers only



5901

Pinion Cap

- High-impact, non-corrosive
- Fits over the pinion and extends 1" (25 mm)
- Supplied standard



5904

SNB Screw Pack - Optional

- Sex nuts and bolts for 2" (51 mm) doors
- Machine screws
- For use with 5200, 5300, 5400 Series closers only



5913

Blade Stop Spacer

- Required to lower parallel arm shoe to clear 1/2" (13 mm) blade stop of aluminum frames
- For use with 5300 and 5400 Series arms
- Includes screw pack



5905

SNB Screw Pack - Optional

- Sex nuts and bolts for 2-1/4" (56 mm) doors
- Machine screws
- For use with 5200, 5300, 5400 Series closers only

FOR ANY HAGER PURCHASE CONTACT INDUSTRIAL HARDWARE & SPECIALTIES INC.

CALL 1800-684-4010

