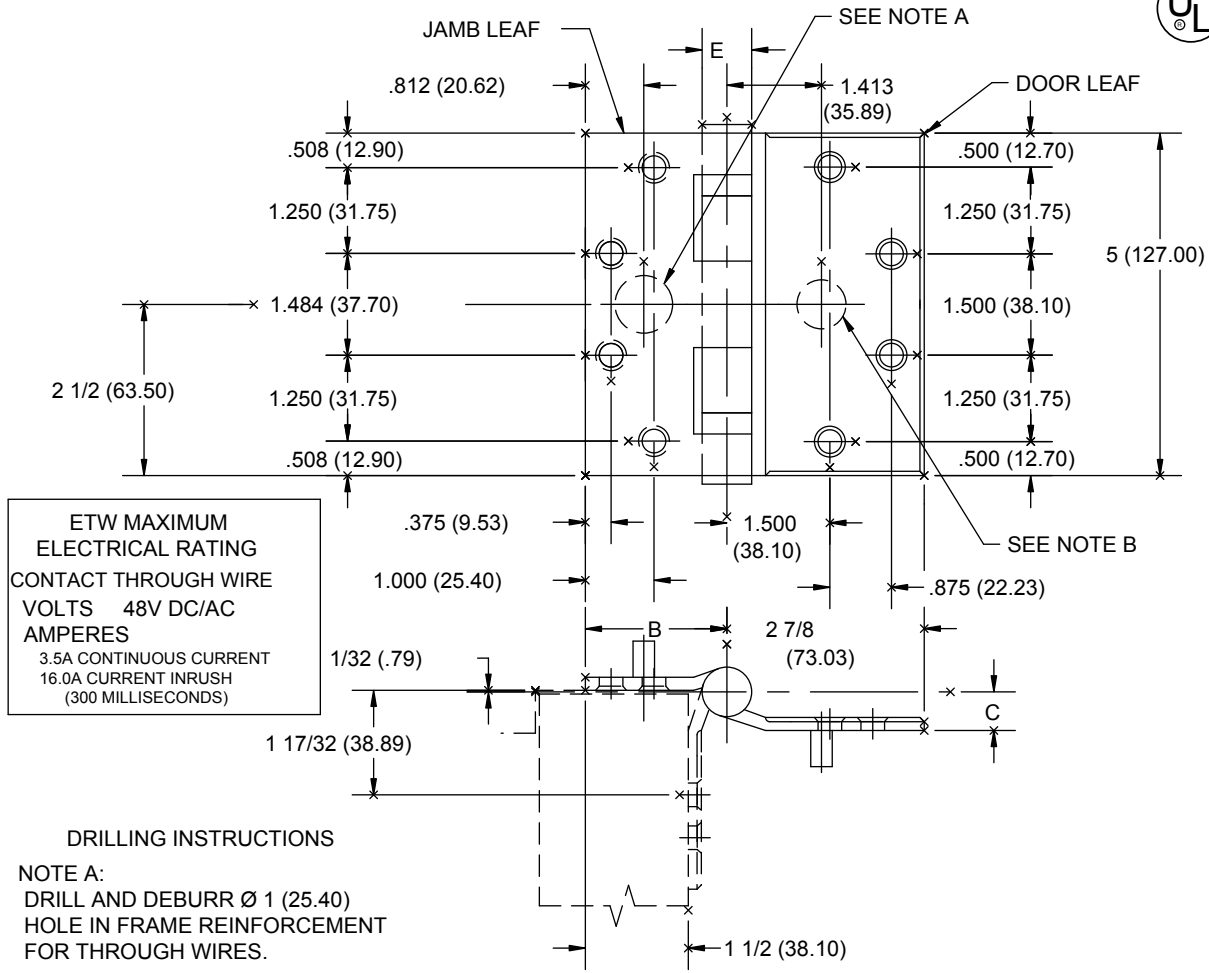


# HALF SURFACE TEMPLATE HINGES ELECTRIC THROUGH WIRE TYPE ETW

Template No. T559

Orig. 9/8/99 RAM

SIZE: 5 (127.00)



**ETW MAXIMUM ELECTRICAL RATING**  
CONTACT THROUGH WIRE  
VOLTS 48V DC/AC  
AMPERES  
3.5A CONTINUOUS CURRENT  
16.0A CURRENT INRUSH  
(300 MILLISECONDS)

**DRILLING INSTRUCTIONS**  
NOTE A:  
DRILL AND DEBURR Ø 1 (25.40)  
HOLE IN FRAME REINFORCEMENT  
FOR THROUGH WIRES.  
NOTE B:  
DRILL AND DEBURR Ø 3/4 (19.05)  
HOLE IN DOOR FACE FOR  
THROUGH WIRES.

-DO NOT SCALE-

CATALOG NUMBER		METAL GAUGE	(B) JAMB LEAF WIDTH	(C) DOOR LEAF OFFSET	(E) KNUCKLE DIAMETER
STEEL HINGES	NON-FERROUS HINGES				
BB1163-ETW	BB2113-ETW	.190 (4.83)	2 1/16 (52.39)	9/16 (14.29)	47/64 (18.65)

ALL NON-BRACKETED DIMENSIONS ARE IN INCHES, ALL BRACKETED DIMENSIONS ARE IN MILLIMETERS.

Machine Screw Size: Door Leaf- 1/4-20 x 2" O.H. WITH GROMMET NUTS

Jamb Leaf- 12-24 x 1/2" F.H.



NOTE: This hinge is intended to be used in the center position.  
Hospital type template hinges conform to the above screw size and location. They are designated by "HT" to catalog number.  
Hager template hinges are made in gauge and with screw holes located to conform to ANSI-A156.7.

HAGER RESERVES THE RIGHT TO MAKE DESIGN CHANGES WITHOUT NOTICE. CALL HAGER ENGINEERING AT 1-800-325-9995 FOR LATEST REVISION DATE OF TEMPLATE.

**HAGER COMPANIES**  
139 VICTOR STREET  
P.O. BOX 12300  
ST. LOUIS, MISSOURI 63157-0300

Template No. T559