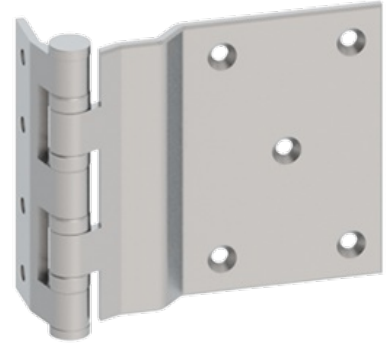


BB1266

Five Knuckle - Full Surface -
 Ball Bearing - Heavy Weight

Note:

- When opened 90°, door projects 1/64" (4 mm) past stop of jamb



PRODUCT SPECIFICATIONS

DESCRIPTION:

- ANSI A8321
- Beveled surface leaves
- Non-rising removable pin with button tip and plug
- Four ball bearings
- Reversible
- For use in hospitals or other institutional type buildings

MATERIAL:

- Steel with Stainless Steel pin

FINISHES:

- USP, US10, US10A, US10B, US26D

PRODUCT SIZE OPTIONS

HINGE SIZE (INCHES)	HINGE SIZE (MM)	GAUGE OF METAL	HOLE COUNT	DOOR LEAF SCREW SIZE (MACHINE)	JAMB LEAF SCREW SIZE (WOOD)
5	127	0.190	9	2 x 1/4-20 FH	1/2 x 1/4-20 FH