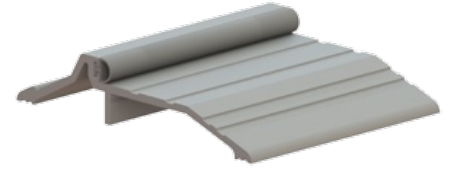


532S

5" Panic Threshold



Application:

- Available with Sure-Step non-slip abrasive coating

PRODUCT SPECIFICATIONS

FINISHES:

- MIL, DBA, GLD

INSERTS:

- V= Vinyl
- N= Neoprene, EDPM, or TPE
- S= Silicone
- W= Pile

WIDTH:

- 5" (127 mm)

HEIGHT:

- 1" (25.4 mm)

FASTENERS:

- #10 x 1-1/2" sheet metal screws, other screw types and anchors available upon request

DOOR CLEARANCE:

- Allow 3/4"