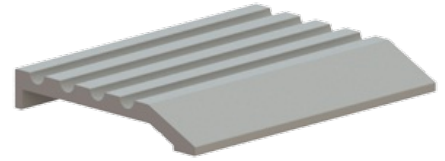


433S

3" Half Saddle Threshold



PRODUCT SPECIFICATIONS

FINISHES:

- MIL, DBA, GLD

WIDTH:

- 3" (76.2 mm)

HEIGHT:

- 1/2" (12.7 mm)

OPTIONS:

- Available with Sure-Step non-slip abrasive coating.

FASTENERS:

- #10 x 1-1/2" sheet metal screws, other screw types and anchors available upon request

NOTES:

- MIL finish thresholds are supplied with zinc plated screws
- Color anodized thresholds are supplied with screws plated to match